



DUKE

TIANJIN ROYAL DUKE LTD

TIANJIN ROYAL DUKE LTD

📍 Address : Wangqingtu Town, Wu Qing District, Tianjin City

☎ Mob: +86-1053876217

👤 WeChat ID: royalduketianjin

✉ Email: info@dukeroyal.com.cn

🌐 www.dukeroyal.com.cn

DUKE

BICYCLE TIRE
FOLDABLE BEAD TIRE
E-BIKE TIRE



ABOUT

Tianjian Royak Duke Ltd. is engaged in product design development, manufacturing sales and service in one of the professional bicycle enterprises. Our company has an area of 20000 square meters, Located in Tianjin industrial zone with convenient transportation which was near Wangqingtu Town, Wuqing District, Tianjin.

Our company makes a point of introducing talents, has accumulated a large number of outstanding management personnel and technical personnel, created a high-quality work force, constantly improved the management level, and developed good market. We got the ISO 9001: 2015 quality management system certificate in 2015. Our products were gained the best reputation from our clients. The number of employees and output value of profit has increased year after year. The staff had grown to hundreds of people with an annual output of 400,000 pcs bicycles, we insist on the rule of "quality is the life" which runs through every aspect of enterprise. Our products are sold to domestic provinces and cities and Russia, Mexico, Indonesia, Philippines, Kuwait, African Countries etc. Our company has won the trust of customers and achieved a good reputation in the community.

CONTENTS

Technical specifications	02
E-bike new pattern	03
Bicycle	08
Road/Racing	26
Fat bike	28
Color & Reflective & Foldable tire	30
E-bike & power scooter tyre	32
Inner tube	38

Single-Ply Casing

With one layer of nylon wrapped from bead to bead, a single ply conforms well to the terrain and offers a reasonable weight.

Wire Bead

A sturdy material is needed to hold the tire against the rim when inflated. Wire is used to ensure the bead will not expand, but wire is also heavier,

Foldable Bead

A foldable bead also stays tight to the rim but is lighter weight and easier to transport.

①The bead is composed of an aramid or Kevlar material.

②Made of 27 to 36 soft steel wires with circular diameters ranging from 0.12 to 0.16 millimeters based on our own patent and a special process.



The flat design in the middle can achieve fast rotation on the highway, and the sound on the road is very low. Small square design on its shoulder provides good turning grip. This pattern design can satisfy the need of cyclists to travel fast.

TRD-H 9009

20x4.0

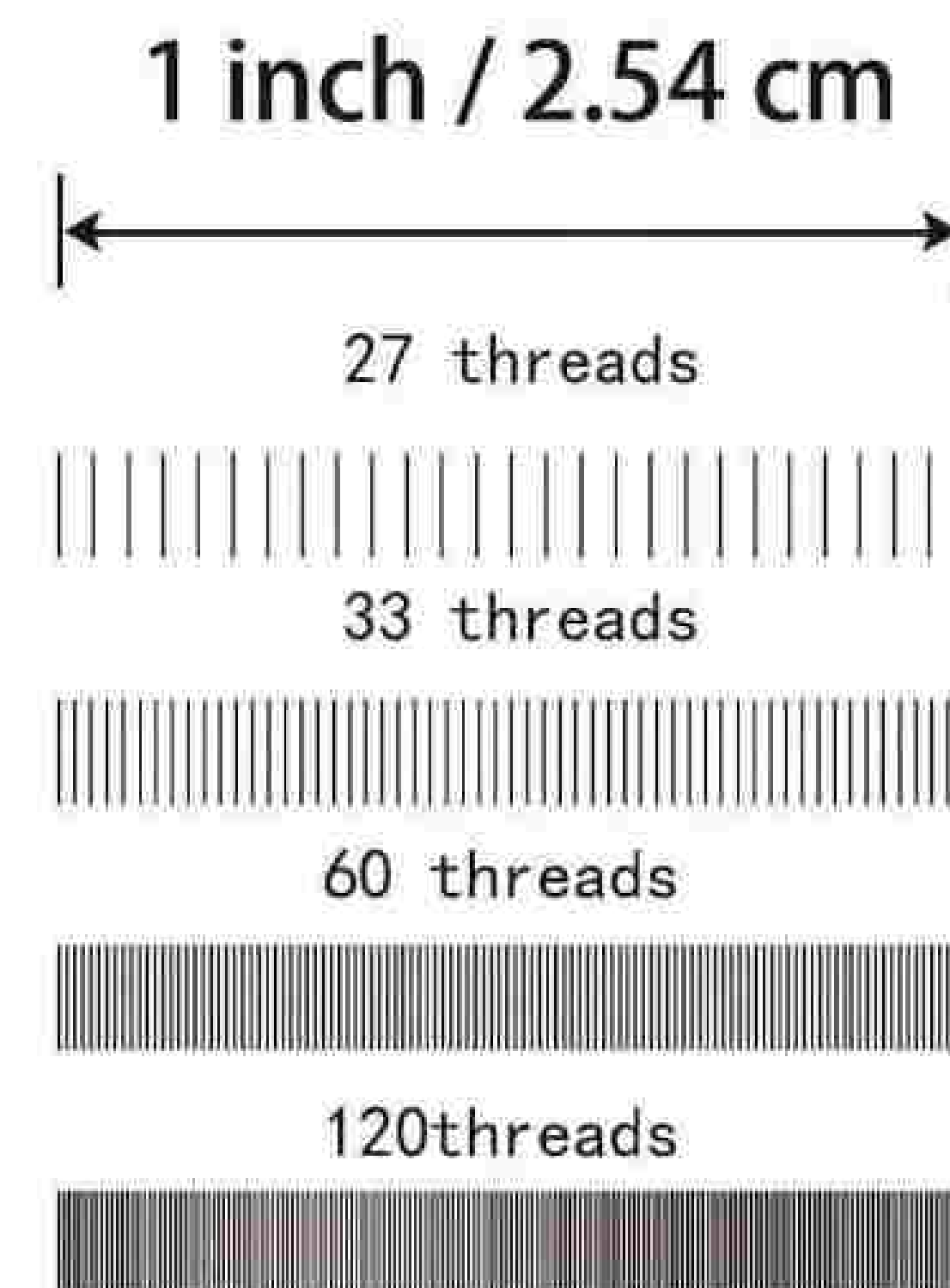
26x4.0

COMPOUNDS & TIRE CONSTRUCTION

Threads per inch

Nylon threads cross through tire's casing with higher TPI which provides better puncture and tear resistance, and increases the overall weight of the tire.

Higher TPI suits all terrains, offering a smoother, lightweight rolling performance.



Compound

Single One compound throughout the tread. Optimized for longevity and performance.

Dual Two compounds comprised of a harder, longer-lasting center and a softer gripping shoulder. composed of an aramid or Kevlar material.

This is a pattern designed for MTB . The whole pattern features particles, allowing riders to ride freely through forest, mountain, beach, desert, gravel and other rough roads.



TRD-H 8003

16x3.0 20x3.0

24x3.0 26x3.0

16x4.0 20x4.0

24x4.0 26x4.0



This is a good pattern design. The overall arrowhead pattern design can achieve fast rolling on the road. Small shoulder knobs designed on wet concrete or asphalt provide good cornering grip, allowing riders to enjoy cornering at high speed.

TRD-H 197

26x1.75
28x1.75



An attractive long distance runner with excellent all-round features. A bike suitable for switching between road and off-road terrain. The compact center provides comfortable rolling and low vibration. The outer edge block design also provides good off-road grip.

TRD-H 9008

14x2.125

TRD-H 9006

20x4.0 16x2.125
350-10 300-10



It is an attractive road pattern, the rectangular pattern design in the middle can provide good straightness, and the design makes riders drive more comfortable and faster.

TRD-H 8009

20x2.35 26x2.35





The flat design in the middle can achieve fast rotation on the highway, and the sound on the road is very low. Small square design on its shoulder provides good turning grip. This pattern design can satisfy the need of cyclists to travel fast.

TRD-H 157

26x1.75

26x1.95



The flat design in the middle can achieve fast rotation on the highway, and the sound on the road is very low. Small square design on its shoulder provides good turning grip. This pattern design can satisfy the need of cyclists to travel fast.

TRD-H 9002

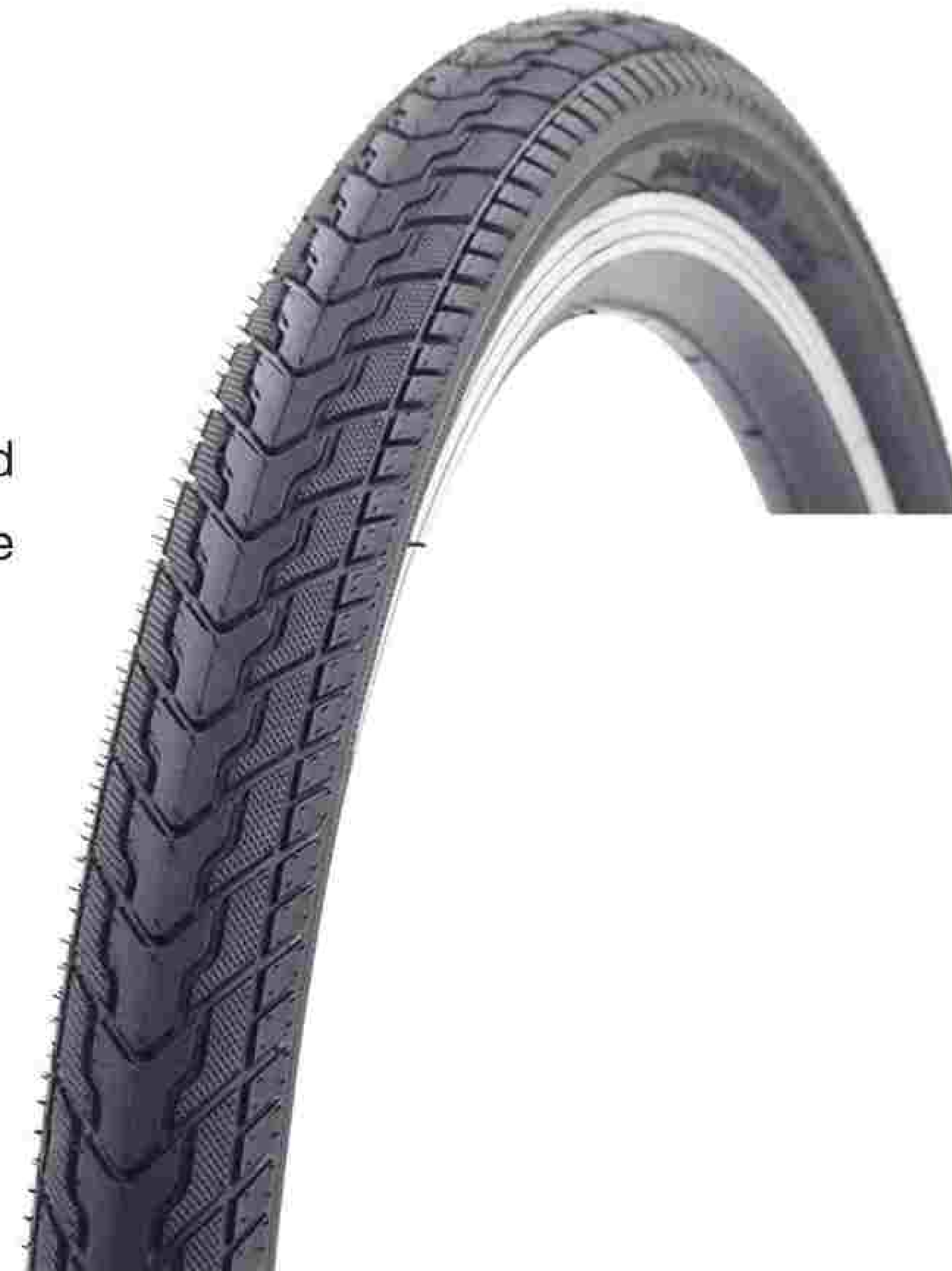
12x2.125 14x2.125 16x2.125 18x2.125

20x2.125 24x2.125 26x2.125 27.5x2.125

29x2.125 26x2.35 27.5x2.35 29x2.35

700x40C

pattern design in the middle can provide good straightness, and the design makes riders drive more comfortable and faster.



TRD-H 197

26x1.75

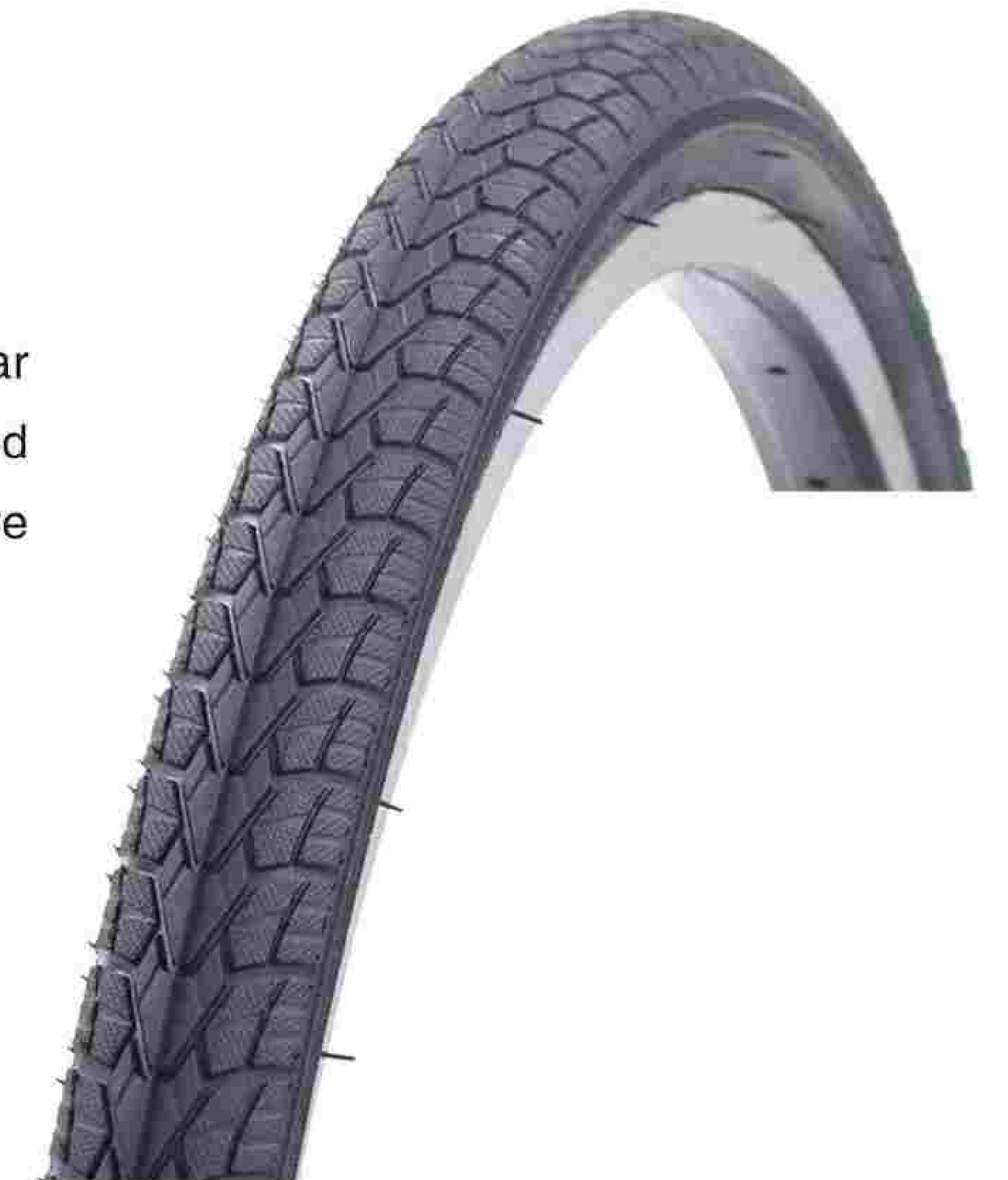
28x1.75

It is an attractive road pattern, the rectangular pattern design in the middle can provide good straightness, and the design makes riders drive more comfortable and faster.

TRD-H 159B

700x35c

(26x13/8x15/8)





TRD-H 102

12x2.125



TRD-H 103

12x2.125/2.4 14x2.125/2.4
16x2.125/2.4 18x2.125/2.4
20x2.125/2.4



TRD-H 106

20x1.75
24x1.75



TRD-H 107

16x1.75
20x1.75



TRD-H 104

12x2.4 14x2.4
16x2.4 18x2.4
20x2.4



TRD-H 105 A

12x1.75 14x1.75
16x1.75 18x1.75
20x1.75 22x1.75



TRD-H 108

12x1.95/2.125
14x1.95/2.125
16x1.95/2.125
18x1.95/2.125
20x1.95/2.125
24x1.95/2.125
28x1.95/2.125



TRD-H 108 A

12x2.125
14x2.125
16x2.125
18x2.125
20x2.125
24x2.125



TRD-H 109

12x1.75 14x1.75
16x1.75 20x1.75



TRD-H 109 A

12x2.125 14x2.125
16x2.125 18x2.125
20x2.125 24x2.125
26x2.125



TRD-H 114

26X1.95



TRD-H 115

20X2.125 24X2.125
26X2.125



TRD-H 110

12x1.75 14x1.75
16x1.75 20x1.75
26x1.95



TRD-H 111

12x1.75 14x1.75
16x1.75 26x1.95



TRD-H 116

16x2.4 20x2.4



TRD-H 118

26x2.125



TRD-H 112

12x1.75 14x1.75
16x1.75



TRD-H 113

12x1.75 16x1.75
20x1.75



TRD-H 119

20x1.95 24x1.95
26x1.95 28x1.95



TRD-H 122

12x1.35



TRD-H 120

20x1 3/8 22x1 3/8
24x1 3/8 26x1 3/8
27x1 3/8



TRD-H 123

26x1.75



TRD-H 127

27x1 3/8



TRD-H 131

26x2x1 3/4



TRD-H 125

26x2.125



TRD-H 126

12x2.125 14x2.125
16x2.125 18x2.125
20x2.125



TRD-H 132

12x2.125 14x2.125
16x2.125 18x2.125
20x2.125 22x2.125
24x2.125 26x2.125

TRD-H 132 A

12x1.95 14x1.95
16x1.95 18x1.95
20x1.95 22x1.95



TRD-H 132 B

12x2.125 14x2.125
16x2.125 18x2.125
20x2.125 24x2.125
26x2.125



TRD-H 133

28x1.75



TRD-H 132

12x2.125 14x2.125
16x2.125 18x2.125
20x2.125 22x2.125



TRD-H 140

28x1 1/2



TRD-H 141

28x1.75



TRD-H 136

28x1.75



TRD-H 137

12x1.95 16x1.95
20x1.95 24x1.95
26x1.95



TRD-H 145

12x1.75 14x1.75
16x1.75 18x1.75



TRD-H 150

20x1.75
26x1.50



TRD-H 138

26x1 3/8
28x1 1/2



TRD-H 139

24x1 3/8
26x1 3/8



TRD-H 153

20x2.125



TRD-H 155

26x2.125



TRD-H 156

20x1.75 22x1.75
24x1.75 26x1.75



TRD-H 157

^E
26x1.75
26x1.95



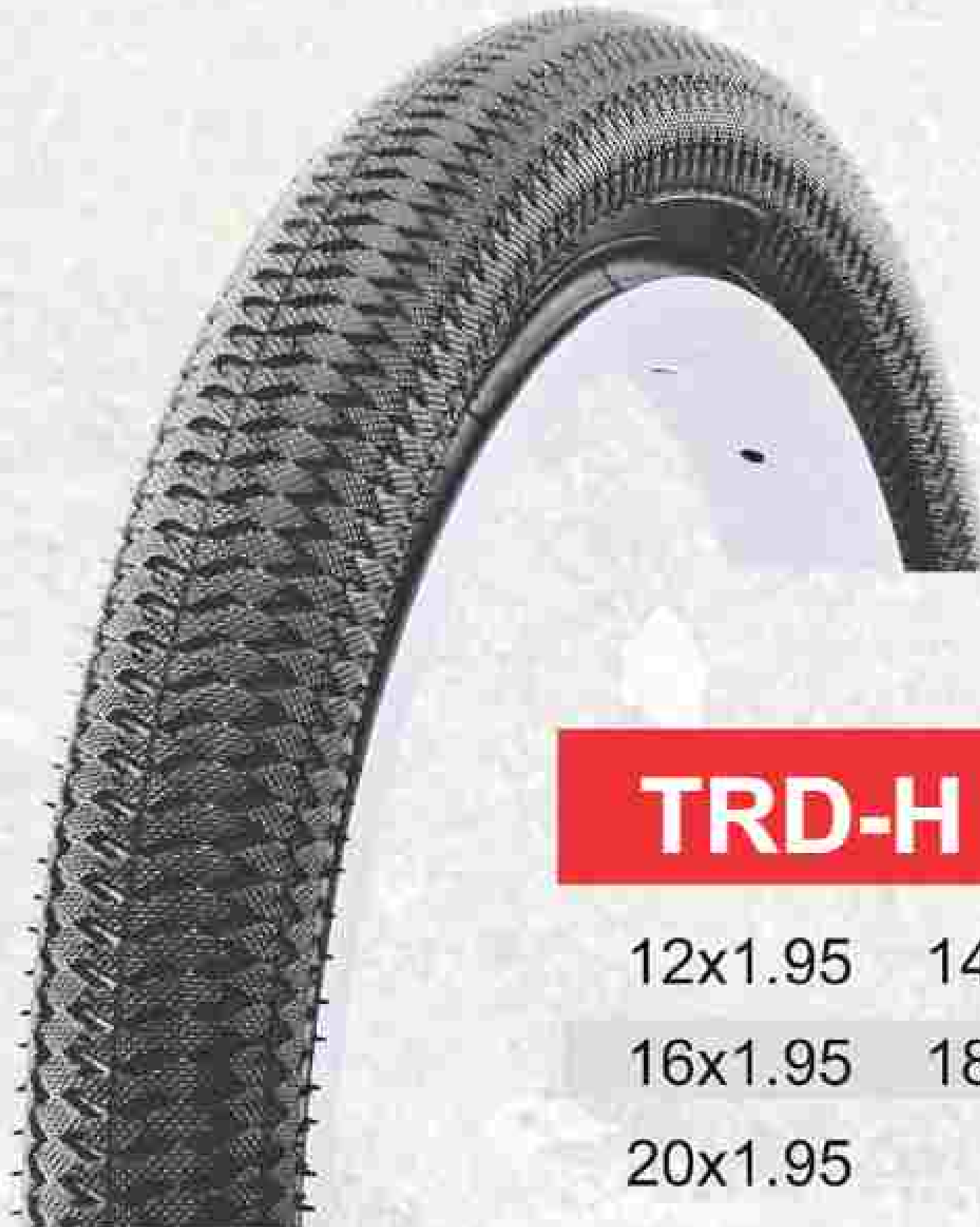
TRD-H 162

16x2.125 18x2.125
20x2.125 24x2.125
26x2.125



TRD-H 163

24x1.75



TRD-H 158

12x1.95 14x1.95
16x1.95 18x1.95
20x1.95



TRD-H 159

20x1.75 24x1.75
700x35C



TRD-H 165

20x1.75



TRD-H 166

12x2.125 14x2.125
16x2.125 18x2.125
20x2.125



TRD-H 160

12x2.125 14x2.125
16x2.125 18x2.125
20x2.125



TRD-H 161

12¹/₂x2¹/₄



TRD-H 167

26x1 3/8



TRD-H 168

16x1.95



TRD-H 169

29x2.35



TRD-H 170

12x1/2x2 1/4

14x2.125 16x2.125

18x2.125 20x2.125



TRD-H 178

12x2.4 14x2.4

16x2.4 18x2.4

20x2.4



TRD-H 185

26x1 3/8

27x1 3/8



TRD-H 171

26x1 3/8



TRD-H 172

12x2.125 14x2.125

16x2.125 18x2.125

20x2.125



TRD-H 186

20x2.125



TRD-H 190

26x1.75 700x35C



TRD-H 176

12x2.125 14x2.125

16x2.125 18x2.125

20x2.125



TRD-H 177

24x1 3/8

26x1 3/8



TRD-H 192

27.5x1.95



TRD-H 196

26x1 1/2*1 5/8



TRD-H 197

26x1.75
28x1.75



TRD-H 024

20x1.95



TRD-H 871

26x1 3/8



TRD-H 980

24x2.125 26x2.125
26x2x1 3/4



TRD-H 051

16x2.125
20x2.125



TRD-H 054

24x1.75 24x2.125
26x2.125



TRD-H 1188

26x1 3/8
27x1 3/8



TRD-H 1501

24x1.50



TRD-H 839

20x2.10



TRD-H 841

26x2.30



TRD-H 2102

26x1 1/2



TRD-H 1059

12x1.95 14x1.95
16x1.95 18x1.95
20x1.95 24x2.125
26x2.125



TRD-H 816

26x2.35
29x2.35



TRD-H 1058

12x2.125 14x2.125
16x2.125 18x2.125
20x2.125 24x2.10
26x2.10 27x2.10
29x2.10



TRD-H 1013

26x1 3/8



TRD-H 823

12 1/2 x 2 1/4



TRD-H 328

12x1.75(1.95)
16x1.95



TRD-H 001

18x2.125 20x2.125
22x2.125 24x2.125
26x2.125



TRD-H 625

27.5x1.75



TRD-H 1077

26x2.125



TRD-H 525

12X1.95
16X1.95



TRD-H 633

12X1.95
16X1.95



TRD-H 452

2 1/4-17



TRD-H 8001

24x1 3/8 26x1 3/8
27x1 3/8



TRD-H 8002

12x2.50 14x2.50
16x2.50 18x2.50
20x2.50 27x2.35
29x2.35



TRD-H 8005

26x2.125 27.5x2.125
29x2.125



TRD-H 8008

24x1.95 26x1.95



TRD-H 8009

20x2.35 26x2.35



TRD-H 8006

24x2.125 26x2.125



TRD-H 8007

26x2.125



TRD-H 9001

26x2.35 27.5x2.35
29x2.35



TRD-H 9003

24x2.125 26x2.125





TRD-H 1012

700x28C



TRD-H 121

700x35C



TRD-H 129

700x35C



TRD-H 159

20x1.75 24x1.75

700x35C



TRD-H 159 B

700x35C

(26x13/8x15/8)



TRD-H 128

700-38C



TRD-H 128 A

700-40C



TRD-H 187

700-25C



TRD-H 188

700x23C



TRD-H 9002

700x40C





TRD-H 189

12x3.0
16x3.0
18x3.0
20x3.0
24x3.0
26x3.0



TRD-H 189 A

20x3.0



TRD-H 8003

16x3.0 20x3.0
24x3.0 26x3.0
16x4.0 20x4.0
24x4.0 26x4.0



TRD-H 8003 A

20x4.0 26x4.0



TRD-H 191

20x3.0



TRD-H 9006

20x4.0
16x2.125
350-10
300-10



TRD-H 9009

20x4.0 24x4.0
26x4.0 20x5.0
26x5.0

COLORD TYRES



REFLECTIVE TYRES

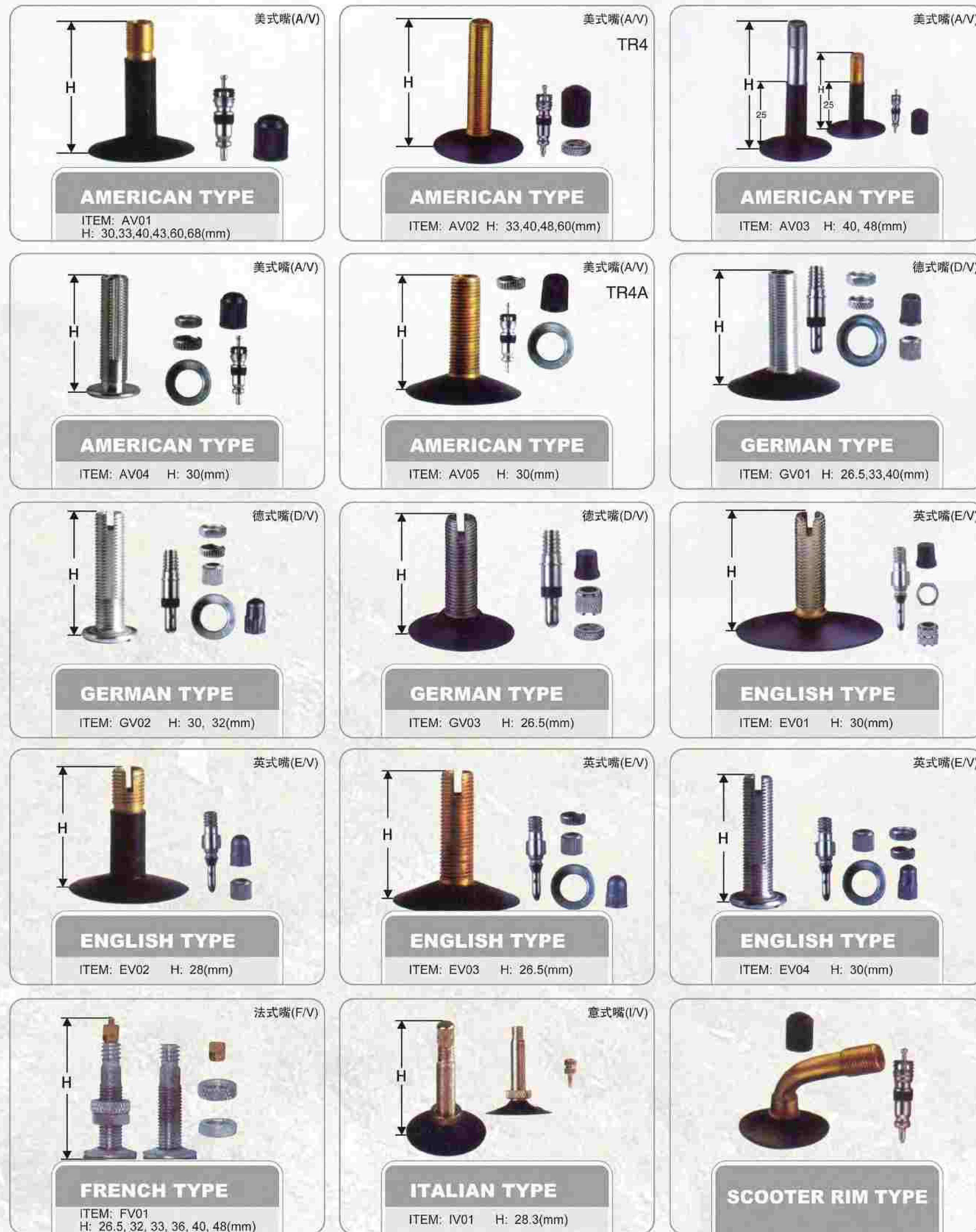


Reflective Strip for
Night Riders
Night Riders
reflective strip for



fluorescent color





INCH	SIZE	PATTERN	
12"	12x1.35	HY-122	
	12x1.75	HY-105, HY-112, HY-145, HY-109, HY-110, HY-111, HY-113, HY-328	
	12x1.95	HY-108, HY-132A, HY-102, HY-137, HY-158, HY-525, HY-1059, HY-633	
	12x1/2x2 1/4	HY-170, HY-823, HY-161	
	12x2.125	HY-108A, HY-109A, HY-102, HY-103, HY-126, HY-132, HY-160, HY-166, HY-172, HY-525, XM-1058, HY-9002, HY-176, HY-132B	
	12x2.40	HY-104, HY-103, HY-178	
	12x2.50	HY-179, HY-8002	
	12x3.0	HY-189	
	14"	14x1.75	HY-105, HY-109, HY-110, HY-111, HY-112, HY-145
		14x1.95	HY-108, HY-132A, HY-158, HY-1059
14x2.125		HY-108A, HY-109A, HY-126, HY-132, HY-166, HY-170, HY-160, HY-172, HY-103, XM-1058, HY-9002, Y-132B, HY-176	
14x2.40		HY-104, HY-103, HY-178	
14x2.50		HY-179, HY-8002	
16"		16x1.75	HY-105, HY-107, HY-109, HY-110, HY-111, HY-112, HY-113, HY-145
		16x1.95	HY-108, HY-132A, HY-137, HY-158, HY-168, HY-1059, HY-328, HY-525, HY-633
		16x2.125	HY-108A, HY-109A, HY-126, HY-132, HY-132B, HY-166, HY-170, HY-160, HY-172, HY-103, HY-103, XM-1058, HY-162, HY-9002, HY-176, HY-9006, HY-051
		16x2.40	HY-104, HY-116, HY-103, HY-178
		16x2.50	HY-179, HY-8002
	16x3.0	HY-189, HY-8003	
	16x4.0	HY-8003	
	18"	18x1.75	HY-105, HY-145
		18x1.95	HY-108, HY-132A, HY-158, HY-1059
		18x2.125	HY-108A, HY-109A, HY-126, HY-132, HY-166, HY-170, HY-160, HY-172, HY-103, XM-1058, HY-A001, HY-162, HY-9002, HY-132B, HY-176
18x2.40		HY-104, HY-103, HY-178	
18x2.50		HY-179, HY-8002	
18x3.0		HY-189	
20"		20x1.75	HY-105, HY-106, HY-107, HY-109, HY-113, HY-145, HY-150, HY-156, HY-159, HY-165
		20x1.95	HY-108, HY-132A, HY-137, HY-158, HY-024, HY-1059, HY-119
		20x2.10	HY-839
		20x2.125	HY-108A, HY-109A, HY-126, HY-132, HY-166, HY-170, HY-160, HY-172, HY-186, HY-103, HY-115, HY-153, XM-1058, HY-A001, HY-162, HY-9002, HY-132B, HY-176, HY-051
	20x1 3/8	HY-120	
	20x2.35	HY-8009	
	20x2.40	HY-104, HY-116, HY-103, HY-178	
	20x2.50	HY-179, HY-8002	
	20x3.0	HY-189, HY-189A, HY-191, HY-8003	
	20x4.0	HY-9009, HY-8003, HY-8003A, HY-9006	

INCH	SIZE	PATTERN	
22"	22x1.75	HY-156, HY-105	
	22x1.95	HY-132A	
24"	22x2.125	HY-A001, HY-132, HY-132B	
	22x1 3/8	HY-120	
	24x1.50	HY-1501	
	24x1.75	HY-106, HY-156, HY-159, HY-163, HY-594	
	24x1.95	HY-137, HY-173, HY-8008, HY-119	
	24x2.10	XM-1058	
	24x2.125	HY-108A, HY-109A, HY-132, HY-594, HY-980, HY-8006, HY-115, HY-1059, HY-A001, HY-162, HY-9002, HY-9003, HY-132B	
	24x1 3/8	HY-120, HY-139, HY-8001, HY-177	
	24x3.0	HY-189, HY-8003	
	24x4.0	HY-8003, HY-9009	
26"	26x1.50	HY-150	
	26x1.75	HY-123, HY-156, HY-190, HY-197, HY-157	
	26x1.95	HY-108, HY-110, HY-111, HY-137, HY-173, HY-8008, HY-114, HY-119, HY-157	
	26x2.10	XM-1058	
	26x2.125	HY-109A, HY-118, HY-125, HY-132, HY-594, HY-980, HY-8005, HY-8006, HY-8007, HY-115, HY-1059, HY-A001, HY-155, HY-162, HY-1077, HY-9002, HY-9003, HY-132B	
	26x2.30	HY-841	
	26x2.35	HY-816, HY-8009, HY-9001, HY-9002	
	26x3.0	HY-189, HY-8003	
	26x4.0	HY-9009, HY-8003, HY-8003A	
	26x5.0	HY-9009	
27"	26x1 3/8	HY-120, HY-138, HY-139, HY-167, HY-171, HY-871, HY-1188, HY-8001, HY-185, HY-177, HY-1013	
	26x1 1/2	HY-2102	
	26x2x1 3/4	HY-131, HY-980	
	26x1 1/2x1 5/8	HY-196, HY-159B	
	27x1 3/8	HY-120, HY-127, HY-1188, HY-8001, HY-185	
	27x1 1/4	HY-1013	
	27x2.10	XM-1058	
	27.5x1.75	HY-625	
	27.5x1.95	HY-192	
	27.5x2.125	HY-8005, HY-9002	
28"	27.5x2.35	HY-8002, HY-9001, HY-9002	
	28x1.75	HY-133, HY-136, HY-141, HY-197	
	28x1.95	HY-119	
	28x1 1/2	HY-138, HY-140	
	29x2.10	XM-1058	
	29x2.125	HY-173, HY-8005, HY-9002	
	29x2.35	HY-8002, HY-816, HY-9001, HY-169, HY-9002	
	700C	700x23C	HY-188
		700x25C	HY-187
		700x28C	HY-1012
700x35C		HY-159, HY-121, HY-159B, HY-129	
700x38C		HY-128	
700x40C		HY-128A, HY-9002	
2 1/4-17		HY-452	
300-10		HY-9006	
350-10		HY-9006	
14x2.125E		HY-9008	

